

# art\*

## art\*

## Looking Through Light



◆ There is something mysterious about light, bright or dull, colored or white, which draws the eye and imagination into its presence. Anne-Marie Cornu is a master of illumination and understands its power. The French artist trained in cinematography and audio-visual arts combines the two in her latest exhibition. *A Travers* is a series of light installations using optical fiber threads and a projector in a dark room. A master computer program puts fragments of texts and colored geometric forms into motion, projecting them on three-dimensional screens. Visitors can penetrate the space of this projection, held captive by the strength of the light. ■  
Until March 15th

♣ **Espai Ubú.** Pl. Prim, 2 (Poble Nou). Open: Tue-Sat 4pm-8pm 🆓 Free entry ☎ 93 221 94 42. [www.espaiubu.com](http://www.espaiubu.com)

## Bamako

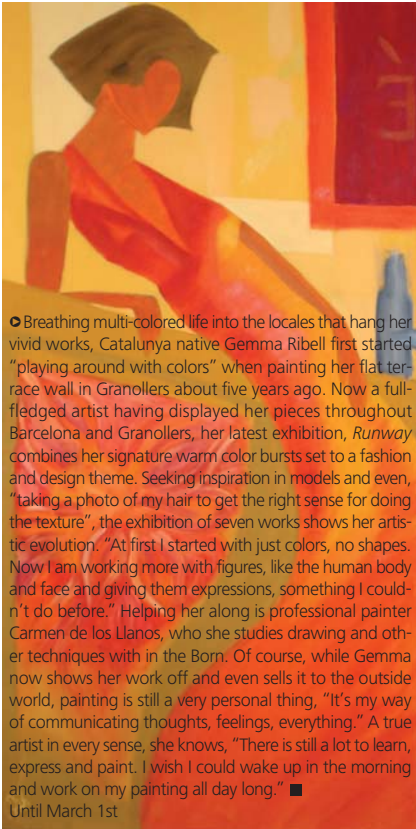
◆ The closeness yet far difference between Spain and its immense neighbor Africa is once again the main focus at this year's *Bamako* exhibition. The second is recognizing the importance of Rencontres Africaines de la Photographie. The bi-annual meetings that include photography and visual displays have become one of the largest artistic events in Africa. Despite its geographic proximity, the creative vitality of the region continues to be widely unknown. Creating exposure within Africa is one step. Stretching awareness outside the continent is the next. To make that happen Barcelona will display over 150 of the finest contemporary photos, films and video installations from the region. ■

February 24th – May 24th



♣ **CCCB.** C/ Montalegre, 5 (Raval). Open: Tue-Sun 11am-8pm, Thurs 11am-10pm. Closed: non-holiday Mon 🆓 Free entry ☎ 93 306 41 00.  
[www.cccb.org](http://www.cccb.org)

## Gemma Ribell



◉ Breathing multi-colored life into the locales that hang her vivid works, Catalunya native Gemma Ribell first started “playing around with colors” when painting her flat terrace wall in Granollers about five years ago. Now a full-fledged artist having displayed her pieces throughout Barcelona and Granollers, her latest exhibition, *Runway*, combines her signature warm color bursts set to a fashion and design theme. Seeking inspiration in models and even, “taking a photo of my hair to get the right sense for doing the texture”, the exhibition of seven works shows her artistic evolution. “At first I started with just colors, no shapes. Now I am working more with figures, like the human body and face and giving them expressions, something I couldn’t do before.” Helping her along is professional painter Carmen de los Llanos, who she studies drawing and other techniques with in the Born. Of course, while Gemma now shows her work off and even sells it to the outside world, painting is still a very personal thing. “It’s my way of communicating thoughts, feelings, everything.” A true artist in every sense, she knows, “There is still a lot to learn, express and paint. I wish I could wake up in the morning and work on my painting all day long.” ■  
Until March 1st

♣ **Tèxtilcafé.** C/ Montcada, 12 (Born). Open: Tue-Wed 10am-8.30pm, Thurs and Sun 10am-12am, Fri and Sat 10am-1am. Closed: Mon ☑ Free entry ☎ 93 268 25 98.

**www.textilcafe.com**  
**gemmaribell.arteydeco.com**  
gribell@hotmail.com

## Kiki Smith

◉ In sync with a strong artistic thread of growth and evolution, Kiki Smith’s exhibition *Her Memory* has been a work in progress journeying to its final destination. Reflection on life, death and human existence is a familiar and constant theme for the Nuremberg-born artist who now calls New York home. With this most recent installation Smith explores the life cycle of women as it relates to the creative cycle. She uses classical, mythical and modern influences to look at the different stages and connect the two. The diverse exhibition consists of porcelain and plastic sculptures, large format drawings, transformed furniture pieces and paintings. With a visual and sentimental strength, it is sure to make a lasting impact on visitors. ■  
February 20th – May 31st

♣ **Fundació Joan Miró.** Parc de Montjuïc. Open: Tue-Sat 10am-7pm, Thurs 10am-9.30pm, Sun and Public Holidays 10am-2.30pm. Closed: Mon ☑ Entry €4 temporary exhibitions ☎ 93 443 94 70.

**www.fundaciomiro-bcn.org**



art\*

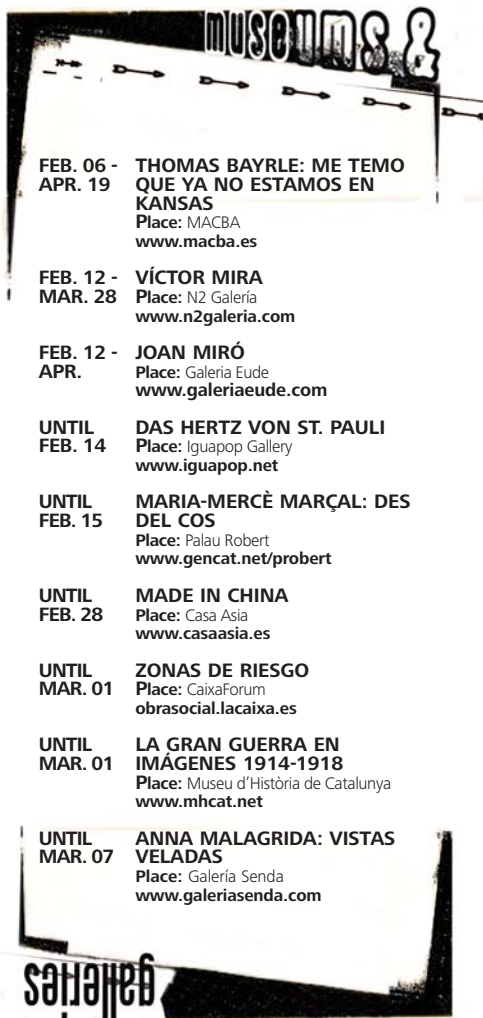


## Irene Bou

◆ A new generation gallery, Artevistas recently celebrated its first year. Run by Catalan-born Kati Lizandra, she has struck a happy medium between art market and classic exhibition space at the Gothic quarter location. High quality works by a selection of top European artists are available at affordable prices. Without a doubt one of their bestsellers is Venezuelan-born Irene Bou. Currently being shown in Madrid and Paris, Bou's work is exclusively sold through Artevistas. Tourists have dominated the majority of the gallery's sales as the local crowd is slowly starting to take notice. Catalan ties from Irene's ancestors brought her to this part of the world looking for new experiences and inspiration. Previously experiencing the city through the eyes of a tourist, Bou now relishes in calling the city her home. The passion to create has been with Irene since infancy. She uses an accumulation of sensations from the absurd and amazing, to love, loss and contemplation in order to transform blank canvas into progressive art. Not restricted by size or format, she loves the freedom this medium allows her to express an unplanned vision. Growing accumulation combined with the desire to show her work, with each piece Bou follows the same path as the viewer moving from observation, to contemplation, and finally arriving at ownership of the artwork. ■

♣ **Artevistas Gallery**, Pg. del Credit, 4 (Barri Gòtic) Open: Daily 11am-9pm  Free entry  93 513 04 65.  
[www.artevistas.com](http://www.artevistas.com), [info@artevistas.com](mailto:info@artevistas.com)

26



**FEB. 06 - APR. 19** **THOMAS BAYRLE: ME TEMO QUE YA NO ESTAMOS EN KANSAS**  
Place: MACBA  
[www.macba.es](http://www.macba.es)

**FEB. 12 - MAR. 28** **VÍCTOR MIRA**  
Place: N2 Galería  
[www.n2galeria.com](http://www.n2galeria.com)

**FEB. 12 - APR.** **JOAN MIRÓ**  
Place: Galeria Eude  
[www.galeriaeude.com](http://www.galeriaeude.com)

**UNTIL FEB. 14** **DAS HERTZ VON ST. PAULI**  
Place: Iguapop Gallery  
[www.iguapop.net](http://www.iguapop.net)

**UNTIL FEB. 15** **MARIA-MERCÈ MARÇAL: DES DEL COS**  
Place: Palau Robert  
[www.gencat.net/probert](http://www.gencat.net/probert)

**UNTIL FEB. 28** **MADE IN CHINA**  
Place: Casa Asia  
[www.casaasia.es](http://www.casaasia.es)

**UNTIL MAR. 01** **ZONAS DE RIESGO**  
Place: CaixaForum  
[obrasocial.lacaixa.es](http://obrasocial.lacaixa.es)

**UNTIL MAR. 01** **LA GRAN GUERRA EN IMÁGENES 1914-1918**  
Place: Museu d'Història de Catalunya  
[www.mhcat.net](http://www.mhcat.net)

**UNTIL MAR. 07** **ANNA MALAGRIDA: VISTAS VELADAS**  
Place: Galería Senda  
[www.galeriasenda.com](http://www.galeriasenda.com)

More listings at [www.miniguide.es](http://www.miniguide.es)



# IguapopGallery



**Eric white + Gomezbueno**

February 19<sup>th</sup> - March 21<sup>st</sup>